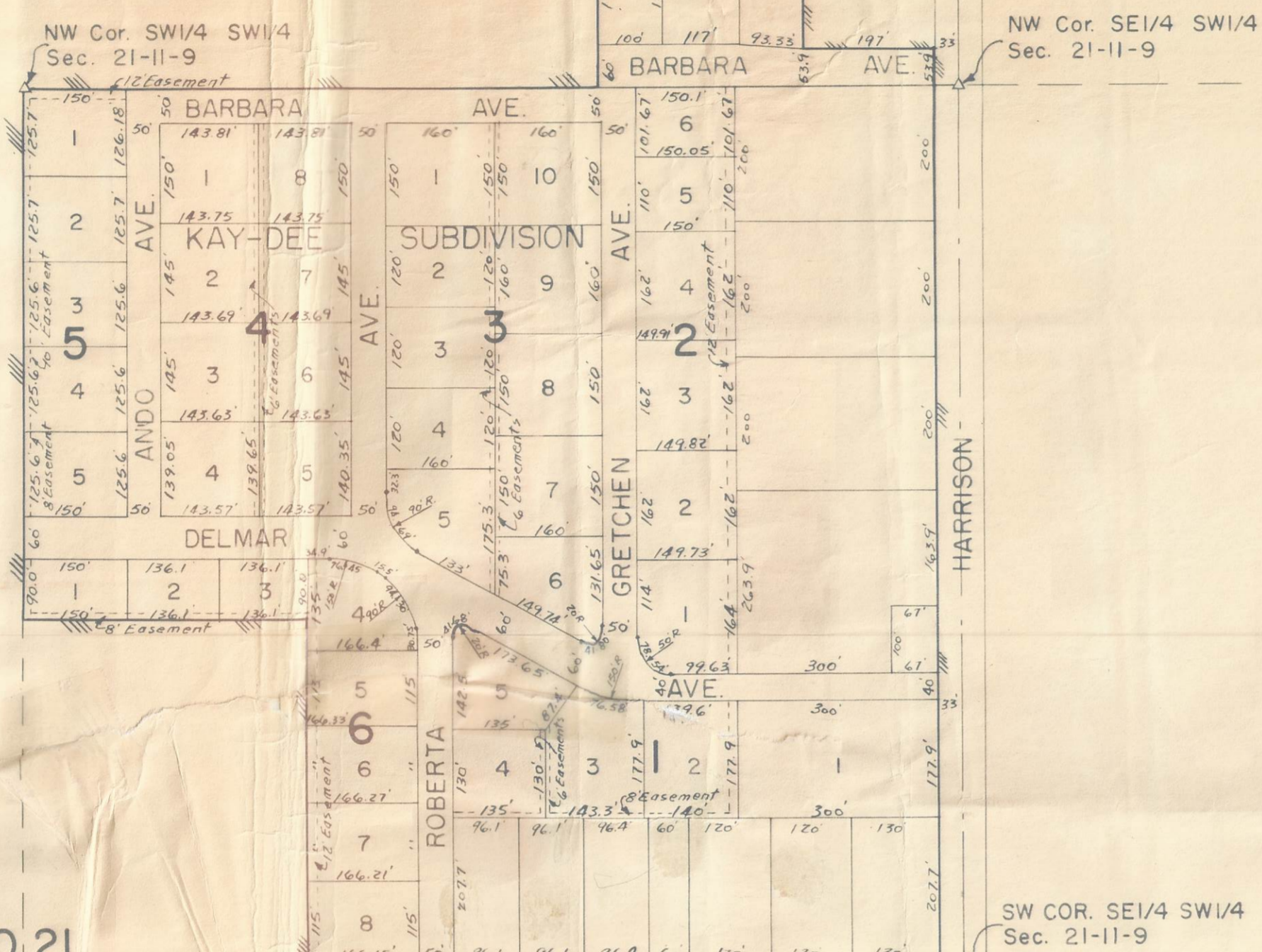


SCALE 1"=200'

BRACH'S FIRST SUBDIVISION



20 21  
29 28

SW COR. SE 1/4 SW 1/4  
Sec. 21-11-9

NE COR. SE 1/4 SW 1/4  
Sec. 21-11-9

NW COR. SE 1/4 SE 1/4  
Sec. 21-11-9

NE COR. NW 1/4 NW 1/4  
Sec. 28-11-9

SE COR. SE 1/4 SW 1/4  
Sec. 21-11-9

SW COR. SE 1/4 SE 1/4  
Sec. 21-11-9

STOLLEY STATE PARK

SCHOOL DISTRICT NO. 1

HAGGE'S SUBDIVISION

HAGGE'S SUBDIVISION

WILLIAM ST

GRAND AVENUE

COUNTRY CLUB DRIVE

PARKVIEW DRIVE

ROSEMON AVENUE

SURVEYORS CERTIFICATE

I hereby certify that this plat of "PARKVIEW, NEBRASKA" was compiled from plats of the included subdivisions, and from descriptions of various tracts on land contained in numerous deeds, all of which are recorded in the Register of Deeds office of the Hall County Court House, Grand Island, Nebraska, and is accurate to the best of my knowledge and belief.

Charles B. Beer  
L.S. 192

State of Nebraska  
County of Hall  
Entered on Numerical Index and filed for record in Office of Register of Deeds on the 19th day of October 1948 at 4:50 minutes P.M. and recorded in Book 104 of Deeds  
By \_\_\_\_\_ Deputy  
Fees \$13.50



VILLAGE OF PARKVIEW, NEBRASKA

Prepared By THOMAS B. BENJAMIN & CLAYTON - ENGINEERS and ARCHITECTS - GRAND ISLAND, NEBRASKA

SE COR. SW 1/4 NW 1/4  
Sec. 28-11-9

SE COR. SE 1/4 NE 1/4  
Sec. 29-11-9

NW COR. SE 1/4 NE 1/4  
Sec. 29-11-9

SW COR. SE 1/4 NE 1/4  
Sec. 29-11-9

SE COR. SE 1/4 NE 1/4  
Sec. 29-11-9