

VILLAGE

OF

PARKVIEW

STOLLEY

N.E. 1/4 N.E. 1/4
STATE

PARK

31

32

PARK VIEW

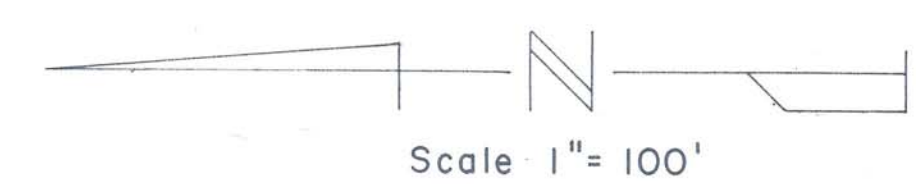
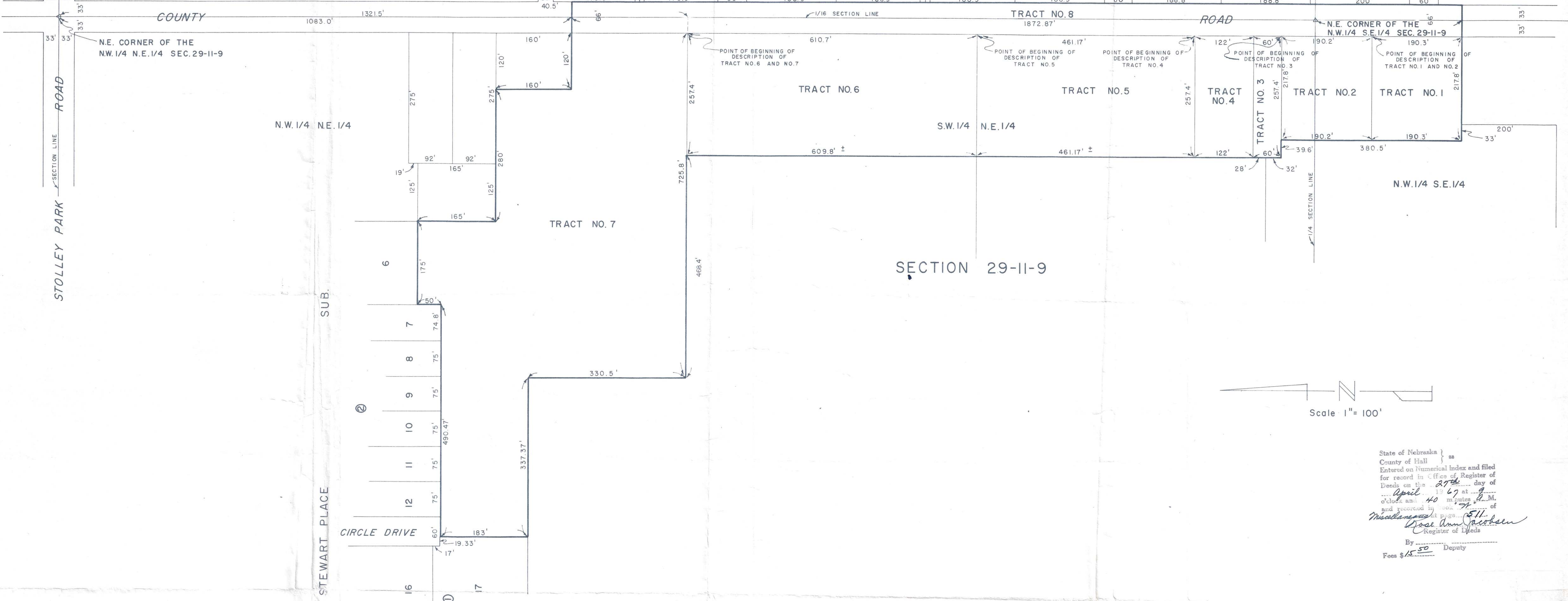
S.E. 1/4 N.E. 1/4
SUBDIVISION

PIONEER
BOULEVARD

17

18

N.E. 1/4 S.E. 1/4
RIVERSIDE FARM SUBDIVISION



State of Nebraska }
 County of Hall } ss
 Entered on Numerical Index and filed
 for record in Office of Register of
 Deeds on the 27th day of
 April 1967 at 9
 o'clock and 40 minutes A.M.
 and recorded in Book 7 of
 Miscellaneous at page 511.
 Rose Ann Probert
 Register of Deeds
 By _____ Deputy
 Fees \$15.50

PLAT OF TERRITORY
 IN THE
 EAST 1/2 OF SECTION 29-T.IIN.-R.9W.
 ANNEXED BY ORDINANCE NO. 4422
 TO THE CITY OF GRAND ISLAND,
 HALL COUNTY, NEBRASKA
 (20.85 ACRES MORE OR LESS)