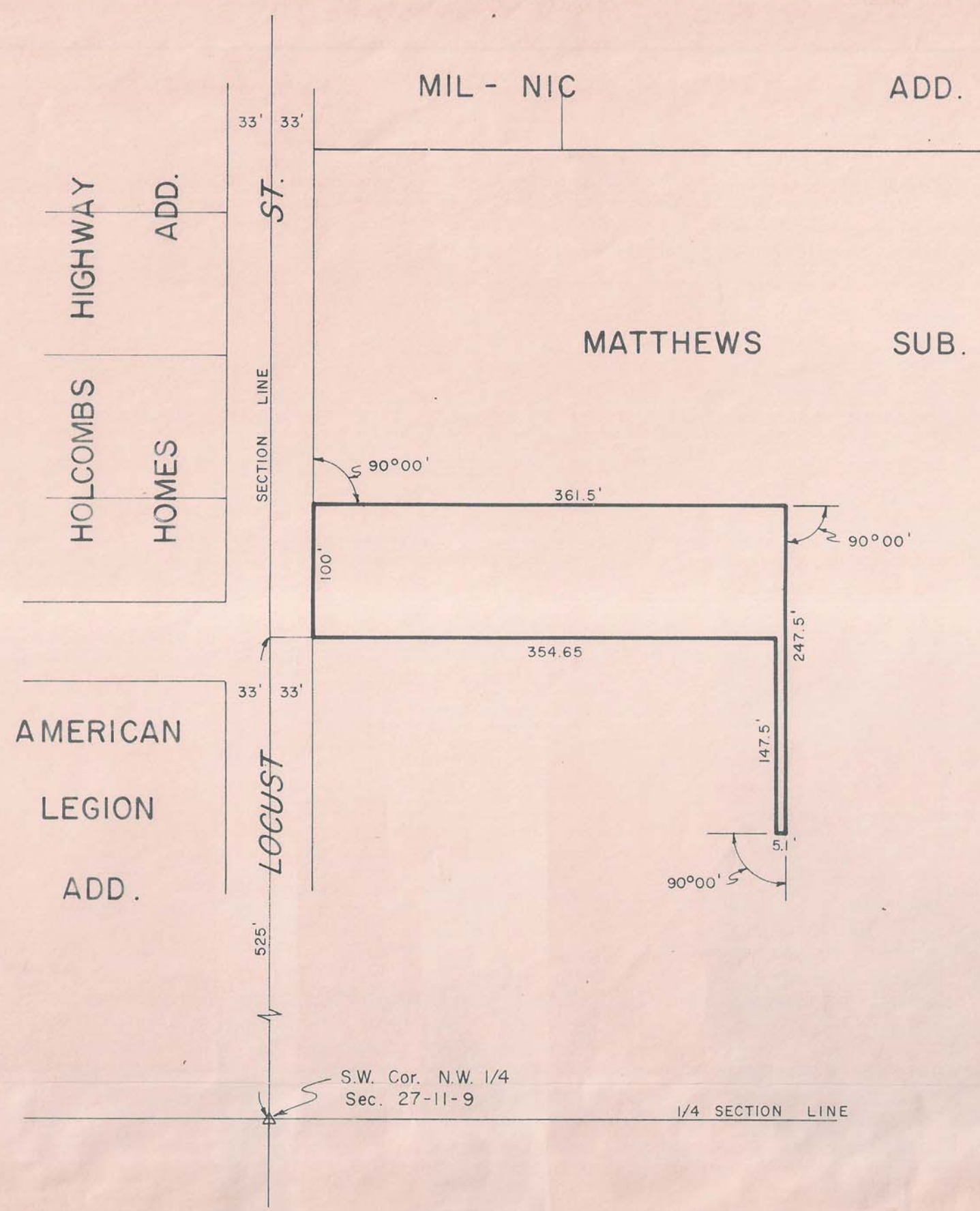


State of Nebraska } ss  
 County of Hall }  
 Entered on Numerical Index and filed  
 for record in Office of Register of  
 Deeds on the 26<sup>th</sup> day of  
April 1967 at 10  
 o'clock and 01 minutes A.M.  
 and recorded in Book "N." of  
*Miscellaneous* at page 509  
*Rose Ann Jacobsen*  
 Register of Deeds  
 By \_\_\_\_\_ Deputy  
 Fees \$ 6.25



SEC. 28-11-9

S.W. Cor. N.W. 1/4  
 Sec. 27-11-9  
 1/4 SECTION LINE

PLAT OF TERRITORY  
 IN THE  
 N.W.1/4 SECTION 27-T.11N.-R.9W.  
 ANNEXED BY ORDINANCE NO. 4416  
 TO THE CITY OF GRAND ISLAND,  
 HALL COUNTY, NEBRASKA  
 (0.85 Acres more or less)

509

JVN