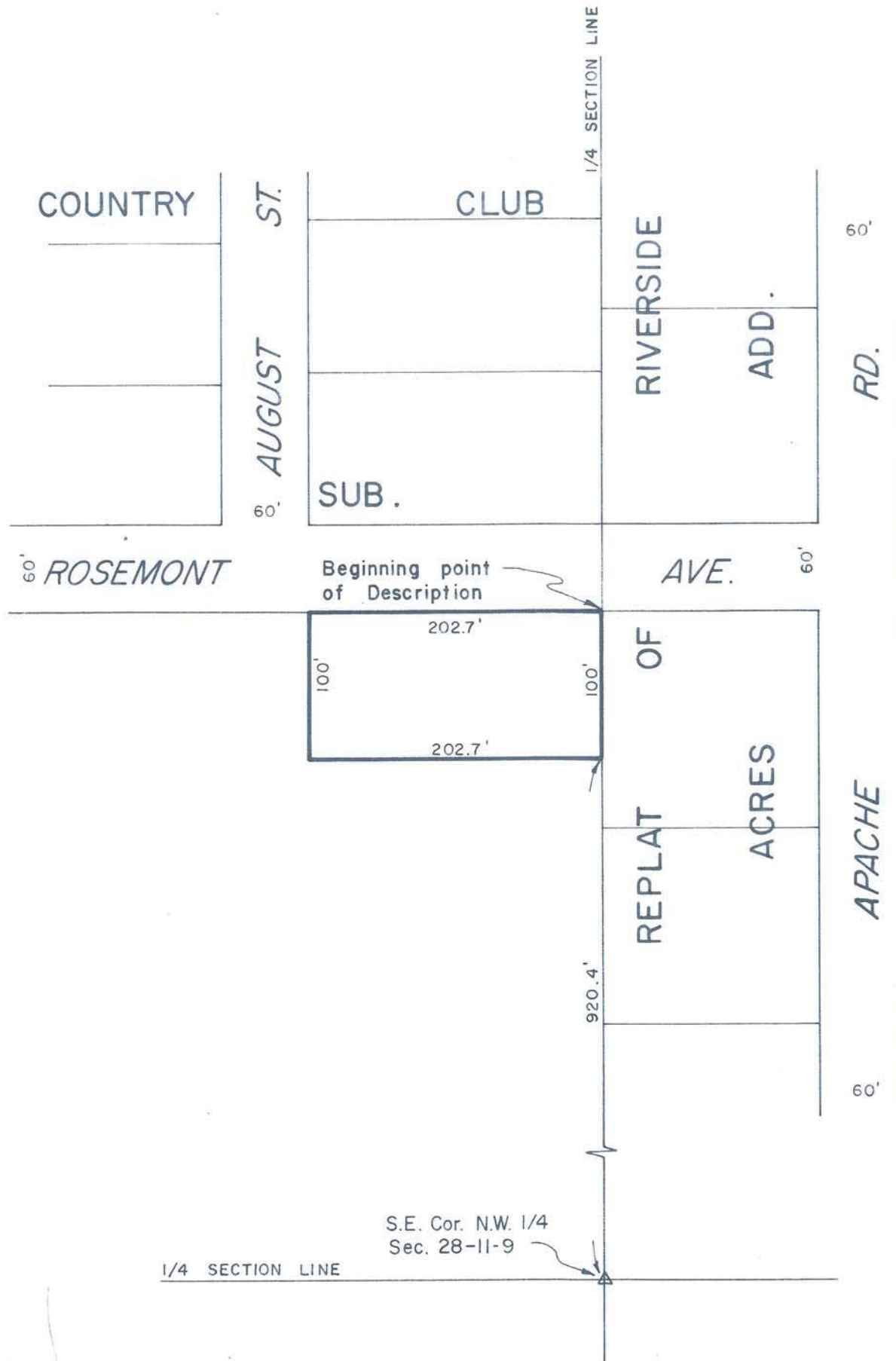




Scale 1" = 100'



State of Nebraska }
 County of Hall } ss
 Entered on Numerical Index and filed
 for record in Office of Register of
 Deeds on the 26th day of
April 1967 at 10
 o'clock and — minutes A.M.
 and recorded in Book 2499
Miscellaneous at page 2499
Rose Ann Jacobsen
 Register of Deeds

By _____
 Fees \$ 6.25 Deputy

PLAT OF TERRITORY
 IN THE
 S.E. 1/4 N.W. 1/4 SECTION 28-T.11N.-R.9W.
 ANNEXED BY ORDINANCE NO. 4410
 TO THE CITY OF GRAND ISLAND,
 HALL COUNTY, NEBRASKA
 (0.465 Acres more or less)

501

JVN