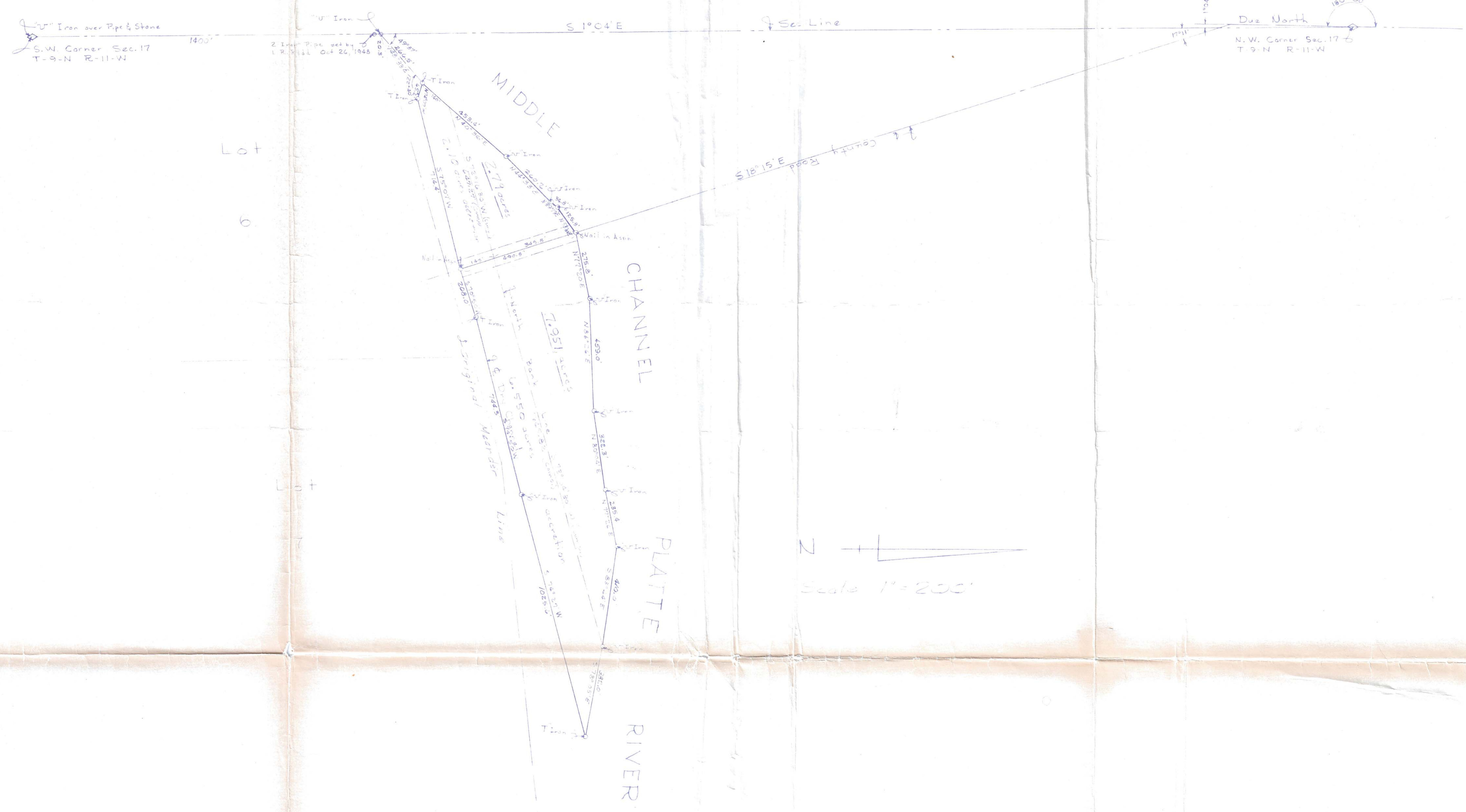


State of Nebraska } ss
 County of Hall }
 Entered on Numerical Index and filed
 for record in the Office of Register of
 Deeds on the 28th day of
 February 1967 at 11
 o'clock and 59 minutes A.M.
 and recorded in book 71 of
 Miscellaneous at page 185
 By *Rose Ann Jacobsen*
 Register of Deeds
 Deputy

FEB 28 11 59 AM '67

STATE OF NEBRASKA } ss
 COUNTY OF HALL }
 By *Rose Ann Jacobsen*
 Register of Deeds



SURVEYORS CERTIFICATE

I hereby certify that the above plat is from an accurate survey under my supervision to the best of my knowledge and belief.



Lester Eilers
 LESTER EILERS LS-31

| | | |
|-------------------------|--------------|-----------------|
| Tow head in Sec 17-9-11 | | |
| SCALE: 1" = 200' | APPROVED BY: | DRAWN BY D.J.H. |
| DATE: Oct. 10, 66 | | REVISED |
| For: Waldemar Lambrecht | | |
| | | DRAWING NUMBER |

8 23
Jed.