

State of Nebraska }
County of Hall }

Entered on Numerical Index and filed
for record in Office of Register of
Deeds on the 29th day of
December 1916 at 10
o'clock and 43 minutes A.M.
and recorded in Book "W" of
Miscellaneous at page 480

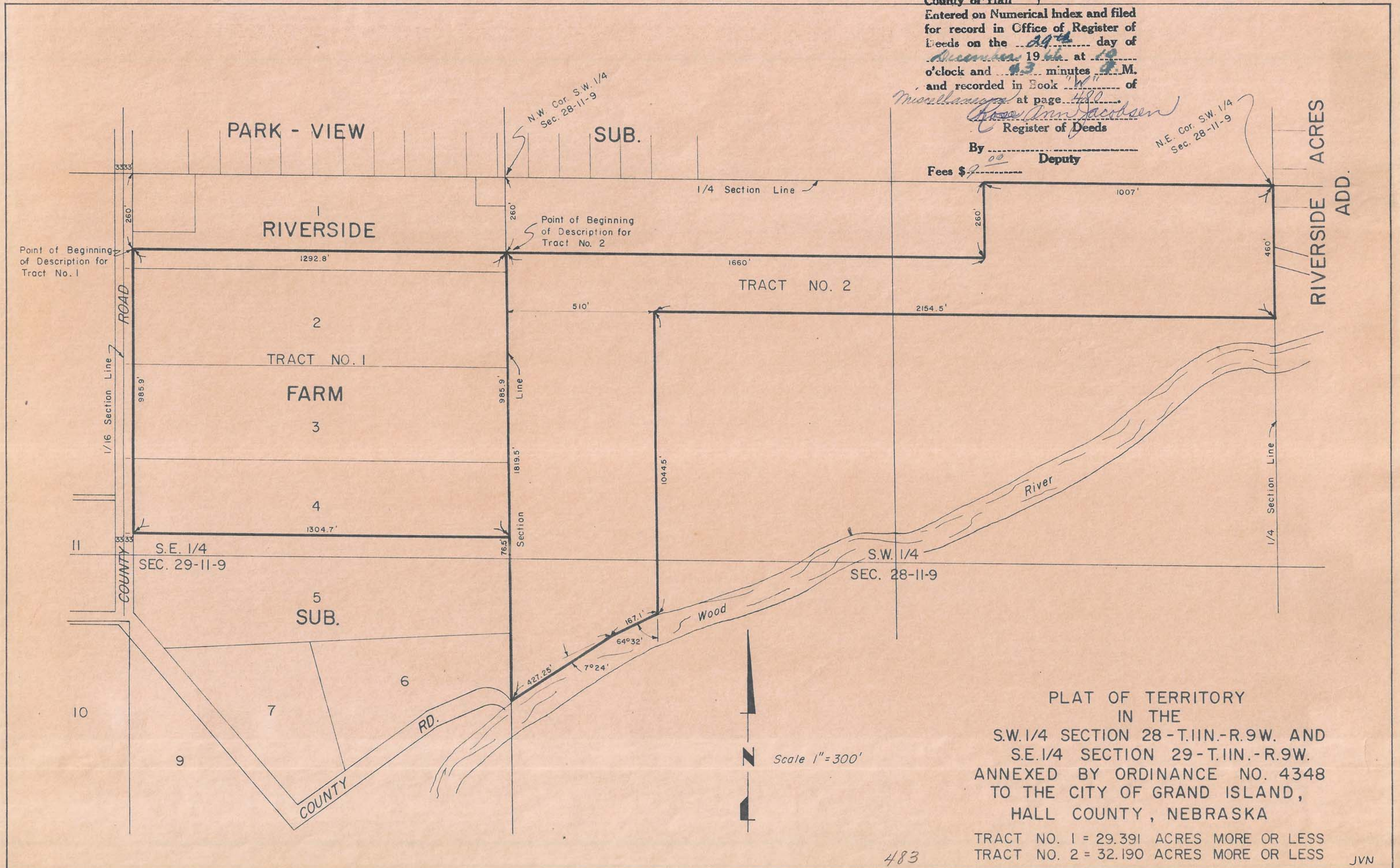
By Ann Jacobsen
Register of Deeds

Deputy

Fees \$ 00

N.E. Cor. S.W. 1/4
Sec. 28-11-9

N.W. Cor. S.W. 1/4
Sec. 28-11-9



PLAT OF TERRITORY
IN THE
S.W. 1/4 SECTION 28-T.IIN.-R.9W. AND
S.E. 1/4 SECTION 29-T.IIN.-R.9W.
ANNEXED BY ORDINANCE NO. 4348
TO THE CITY OF GRAND ISLAND,
HALL COUNTY, NEBRASKA

TRACT NO. 1 = 29.391 ACRES MORE OR LESS
TRACT NO. 2 = 32.190 ACRES MORE OR LESS

483

JVN