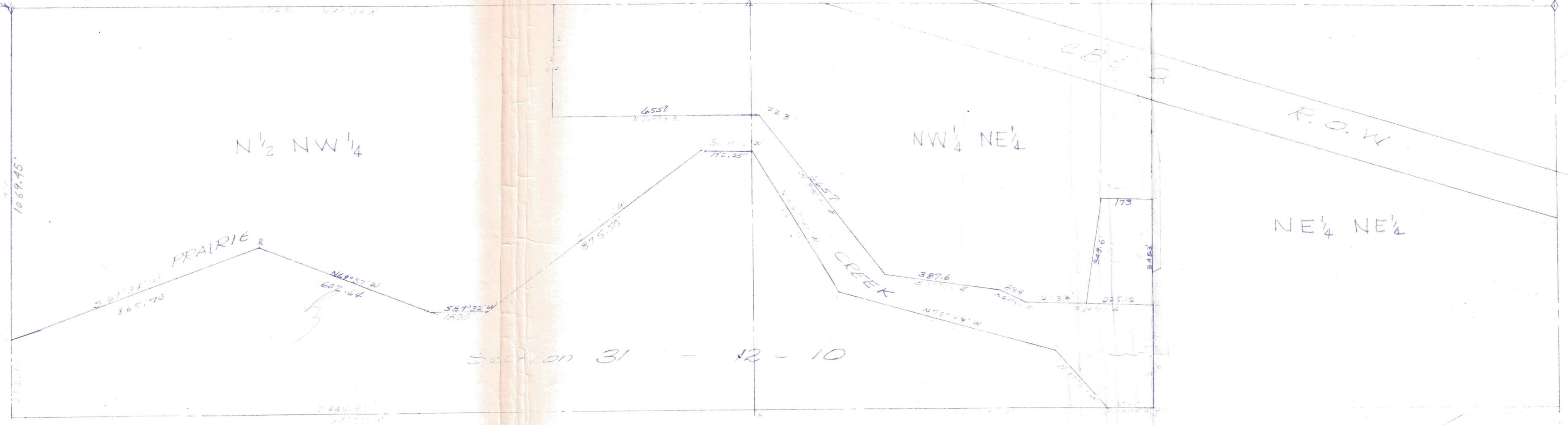


NW Corner of the
N 1/2 NW 1/4 Sec 31-12-10



SECTION 31 - 12 - 10

Description

Plot of a tract of land comprising a part of the North Half of the Northwest Quarter (N 1/2 NW 1/4) and part of the Northwest Quarter of the Northeast Quarter (NW 1/4 NE 1/4) of Section Thirty One, Township Twelve (12) North, Range Ten (10) West of the 6th P.M., Hall County, Nebraska and more particularly described as follows:

Beginning at the Northwest corner of said N 1/2 NW 1/4; thence easterly along and upon the North line of said N 1/2 NW 1/4 a distance of One Thousand Seven Hundred Eighty-Three (1783.0) feet; thence S 1°09'W a distance of Three Hundred Seventy-Two (372) feet; thence N 88°57'E a distance of Six Hundred Seventy-Eight and Two Tenths (678.2) feet; thence S 88°31'E a distance of Six Hundred Sixty-Five and Seven Tenths (665.7) feet; thence S 82°23'E a distance of Three Hundred Eighty-Seven and Six Tenths (387.6) feet; thence S 64°58'E a distance of Eighty-Nine and Four Tenths (89.4) feet; thence S 77°1'E a distance of Four Hundred Twenty-Eight and Forty-Two Hundredths (428.42) feet to a point on the east line of said NW 1/4 NE 1/4; thence S 0°09'E along and upon the east line of said NW 1/4 NE 1/4 a distance of Three Hundred Thirty-Eight (338) feet to the southeast corner of said NW 1/4 NE 1/4; thence S 89°40'W along and upon the south line of said NW 1/4 NE 1/4 a distance of One Hundred Fifty Six and Seventy-Five Hundredths (156.75) feet; thence N 43°34'W a distance of Two Hundred Fifty-Eight and Thirty-Three Hundredths (258.33) feet; thence N 72°43'W a distance of Seven Hundred Thirty-Five and Thirty-Two Hundredths (735.32) feet; thence N 35°40'W a distance of Five Hundred Forty-Two and Ninety-Eight Hundredths (542.98) feet; thence S 89°50'W a distance of One Hundred Fifty-Two and Twenty-Five Hundredths (152.25) feet; thence S 52°49'W a distance of Eight Hundred Seventy-Five and Five Tenths (875.5) feet; thence S 89°32'W a distance of One Hundred Eighty-Nine and Five Tenths (189.5) feet; thence N 69°37'W a distance of Six Hundred Two and Sixty-Four Hundredths (602.64) feet; thence S 69°34'W a distance of Eight Hundred Sixty-Five and Seven Tenths (865.7) feet to a point on the westerly line of said N 1/2 NW 1/4; thence northerly along and upon the westerly line of said N 1/2 NW 1/4 a distance of One Thousand Sixty-Nine and Forty-Five Hundredths (1069.45) feet to the point of beginning and containing 46.7 acres more or less.

I hereby certify that the above plat is a composite of surveys on record at the Hall County Surveyors Office and that the acreage was computed therefrom.

State of Nebraska }
County of Hall } ss
Entered on Numerical Index and filed
for record in Office of Register of
Deeds on the 5th day of
August 1966 at 11
o'clock and 21 minutes A.M.
and recorded in Book 700
of
Miscellaneous at page 444
Dose Ann Grobner
Register of Deeds
By _____
Fees \$7.75 Deputy

Lester Ehlers
LESTER EHLERS LS 31

2819

