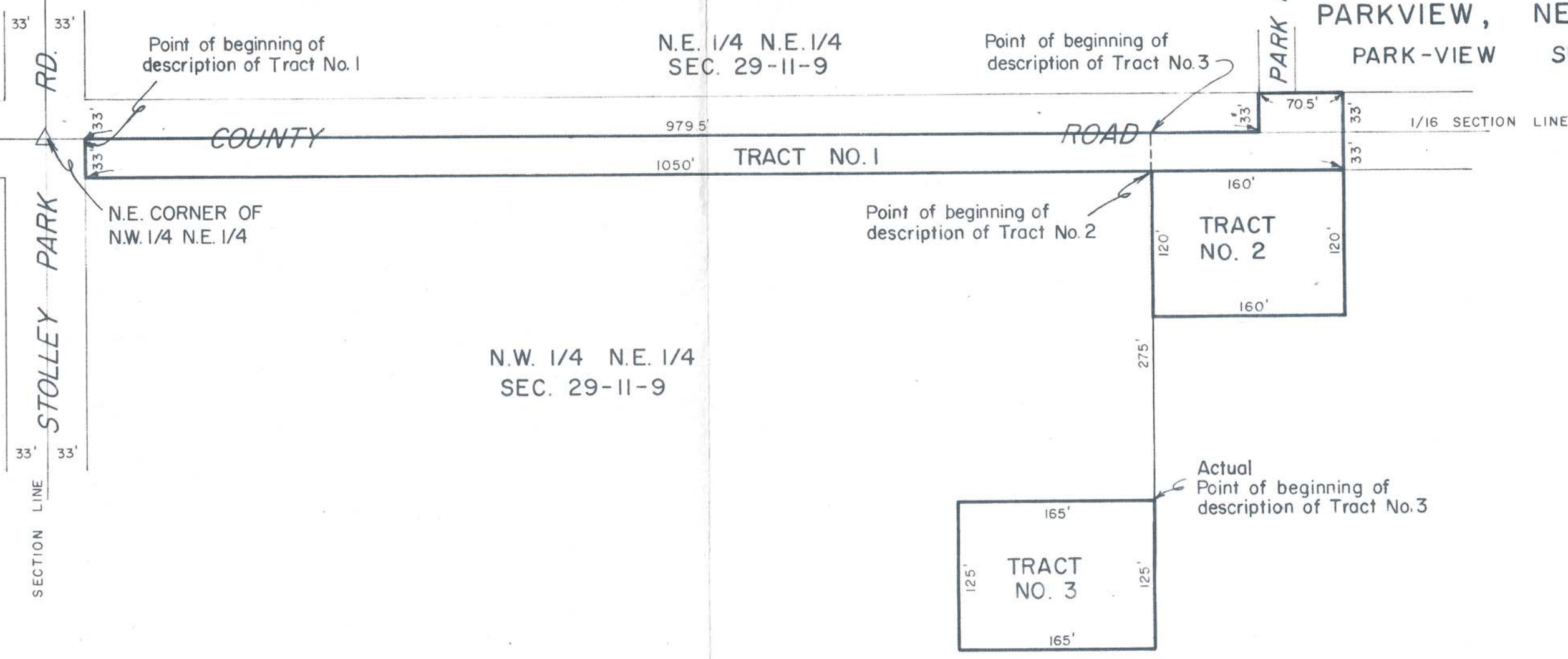


STOLLEY STATE PARK

VILLAGE OF PARKVIEW, NEBR. PARK-VIEW SUB.

N.E. 1/4 N.E. 1/4 SEC. 29-11-9

Point of beginning of description of Tract No. 3



SECTION LINE STOLLEY PARK RD.

Point of beginning of description of Tract No. 1

N.E. CORNER OF N.W. 1/4 N.E. 1/4

N.W. 1/4 N.E. 1/4 SEC. 29-11-9

Point of beginning of description of Tract No. 2

Actual Point of beginning of description of Tract No. 3



State of Nebraska }  
 County of Hall } ss  
 Entered on Numerical Index and filed  
 for record in Office of Register of  
 Deeds on the 14<sup>th</sup> day of  
July 1966 at 2  
 o'clock and 15 minutes P.M.  
 and recorded in Book "Miscellaneous" of  
71 at page 399  
Rose Ann Jacobsen  
 Register of Deeds  
 By Raymond S. Hessel  
 Deputy  
 Fees \$ 2.25

PLAT OF TERRITORY  
 IN THE  
 N.W. 1/4 N.E. 1/4 SECTION 29-T.IIN.-R.9W.  
 AND N.E. 1/4 N.E. 1/4 SECTION 29-T.IIN.-R.9W.  
 ANNEXED BY ORDINANCE NO. 4291  
 TO THE CITY OF GRAND ISLAND,  
 HALL COUNTY, NEBRASKA  
 TRACT NO. 1 = 0.849 ACRES MORE OR LESS  
 TRACT NO. 2 = 0.441 ACRES MORE OR LESS  
 TRACT NO. 3 = 0.473 ACRES MORE OR LESS