



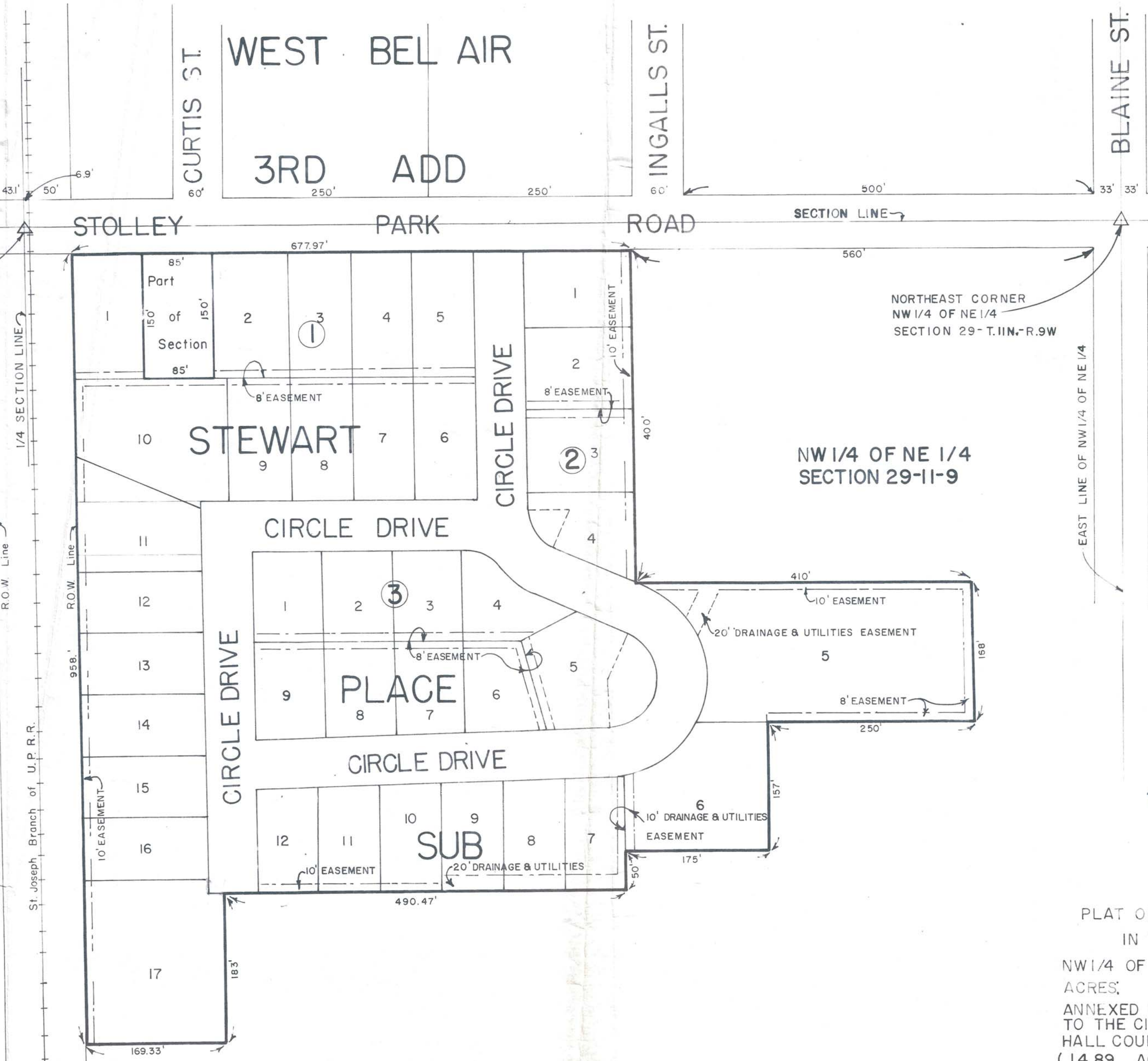
SCALE: 1" = 100'

NORTHWEST CORNER OF NW 1/4 - NE 1/4 SECTION 29-11-9

NORTHEAST CORNER NW 1/4 OF NE 1/4 SECTION 29-11-9

NE 1/4 OF NW 1/4 SECTION 29-11-9

NE 1/4 OF NE 1/4 SECTION 29-11-9



State of Nebraska }  
 County of Hall } ss  
 Entered on Numerical Index and filed for record in Office of Register of Deeds on the 17<sup>th</sup> day of June 1966 at 10 o'clock and 50 minutes P.M. and recorded in Book 28 of Miscellaneous at page 369.  
 By *Case Ann. Deeds*  
 Register of Deeds

Fees \$12.75 Deputy

PLAT OF TERRITORY  
 IN THE  
 NW 1/4 OF NE 1/4 SECTION 29-11-9  
 ACRES:  
 ANNEXED BY ORDINANCE NO. 4287  
 TO THE CITY OF GRAND ISLAND  
 HALL COUNTY, NEBRASKA  
 (14.89 ACRES MORE OR LESS)