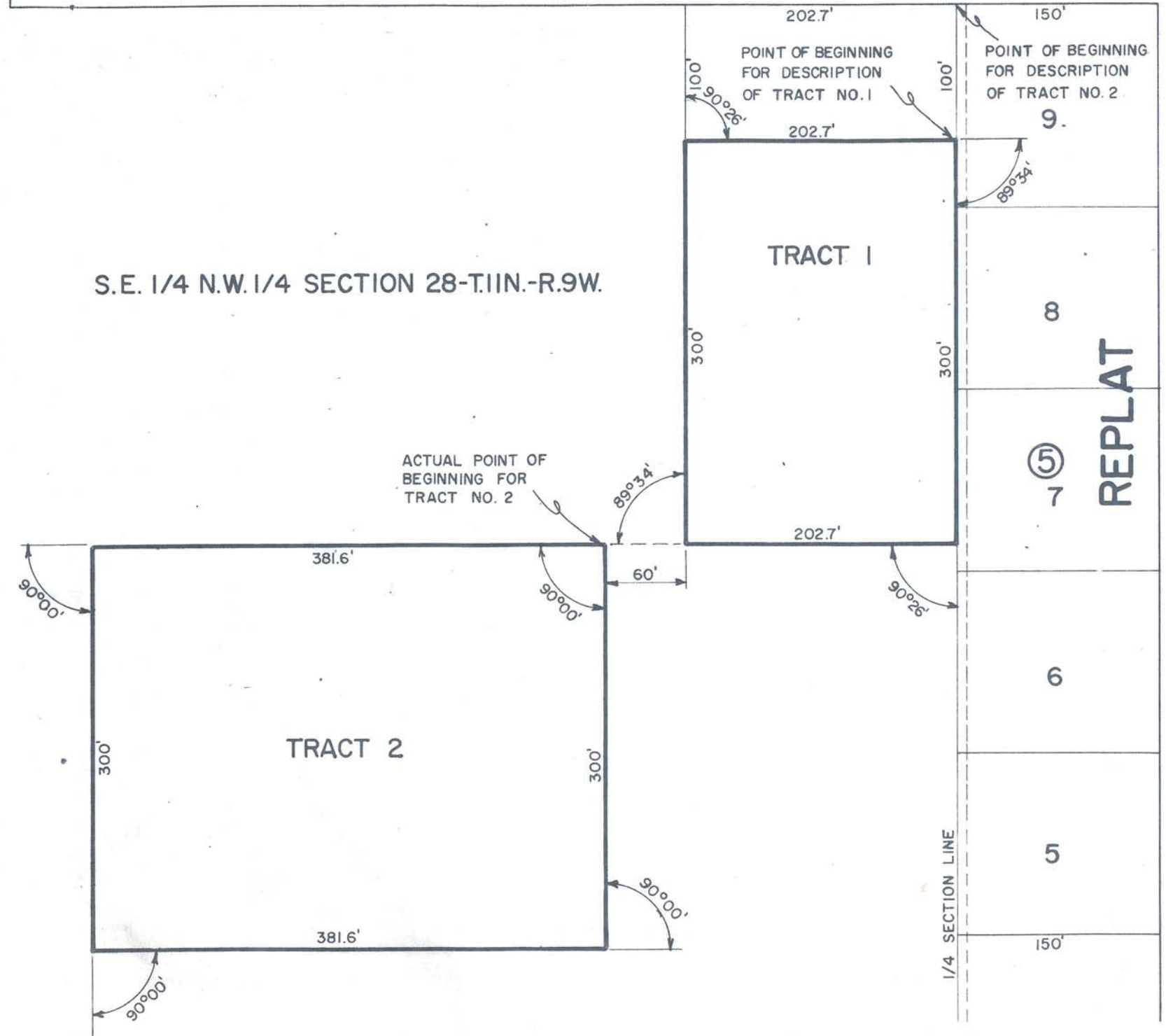


PARKVIEW DRIVE
ROSEMONT
COUNTRY CLUB
AUGUST STREET
SUB. OF
AVENUE

S.E. 1/4 N.W. 1/4 SECTION 28-T.11N.-R.9W.



ROAD
APACHE
RIVERSIDE
ACRES
ADD.
7 ⑤
6
5
4
3
2
1

JUN 8 1 31 PM '66

STATE OF NEBRASKA, ss
COUNTY OF HALL

ROSE ANN JACOBSEN,
Reg. of Deeds

State of Nebraska } ss
County of Hall }

Entered on Numerical Index and filed for record in Office of Register of Deeds on the 8th day of June 19.66 at 1 o'clock and 31 minutes P.M. and recorded in Book 77 of Miscellaneous at page 357

By _____ Deputy

Fees \$ 25

Scale 1"=100'



PLAT OF TERRITORY
IN THE
S.E. 1/4 NW 1/4 SECTION 28-T.11N.-R.9W.
ANNEXED BY ORDINANCE NO. 4282
TO THE CITY OF GRAND ISLAND,
HALL COUNTY NEBRASKA
(TRACT 1=1.396 ACRES MORE OR LESS)
(TRACT 2=2.63 ACRES MORE OR LESS)