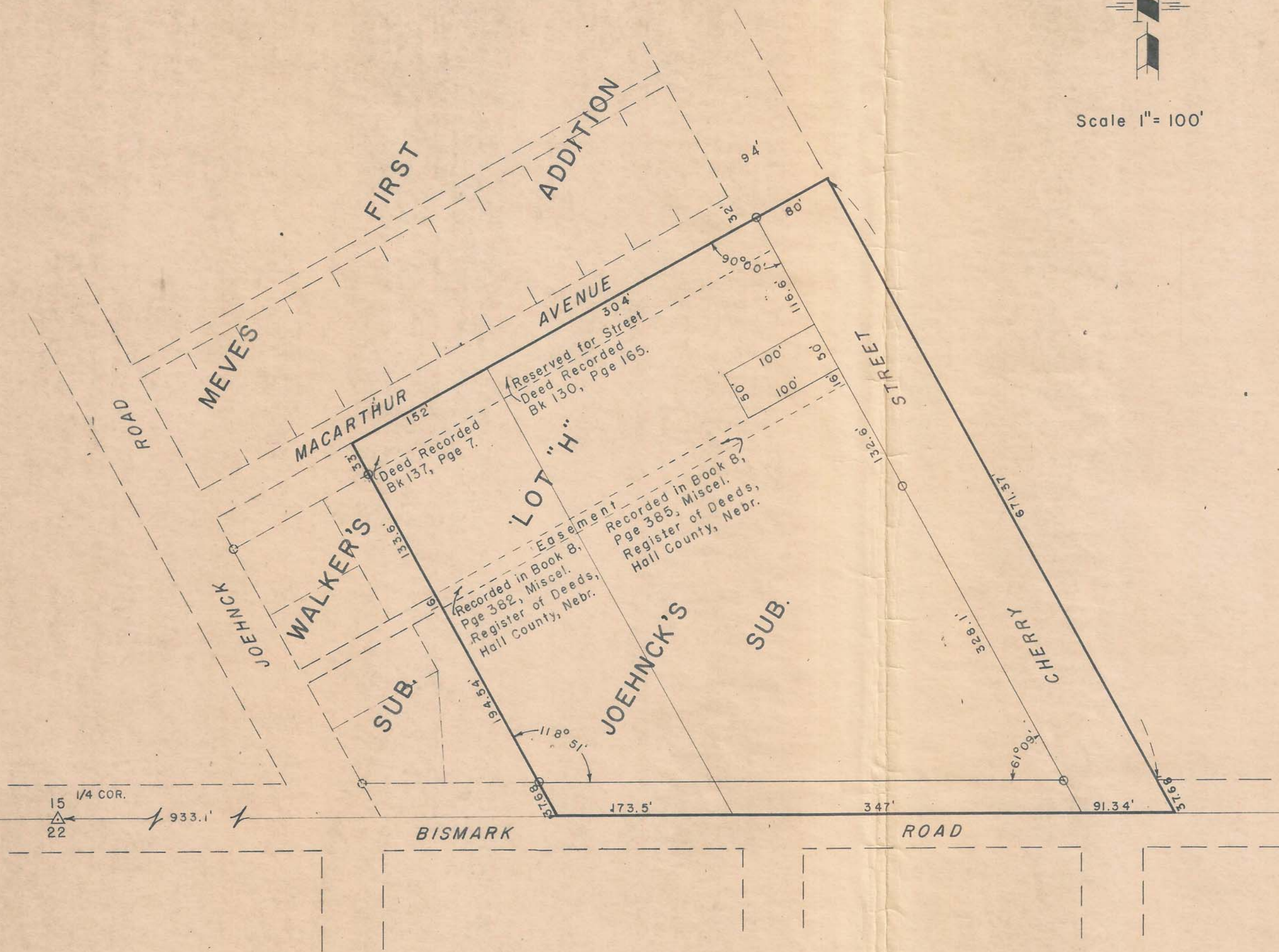


Scale 1" = 100'



Approved for annexation to the City of Grand Island, Nebraska, by the City Planning Commission on this 11th day of March 1964.

John Thomas
Chairman of City Planning Commission

State of Nebraska }
County of Hall } ss
Entered on Numerical Index and filed
for record in Office of Register of
Deeds on the 24th day of
March 1964 at 11
o'clock and _____ minutes A.M.
and recorded in Book 96
Miscellaneous page 227
William Johnson
Register of Deeds
By _____
Deputy
Fees \$ 8.75

PLAT OF TERRITORY
IN THE
S.1/2 OF S.E.1/4 OF SECTION 15-T.11N.-R.9W.
ANNEXED BY ORDINANCE NO. 4128
TO THE
CITY OF GRAND ISLAND,
HALL COUNTY,
NEBRASKA

825

329