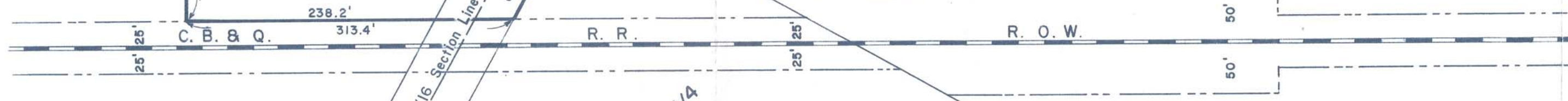
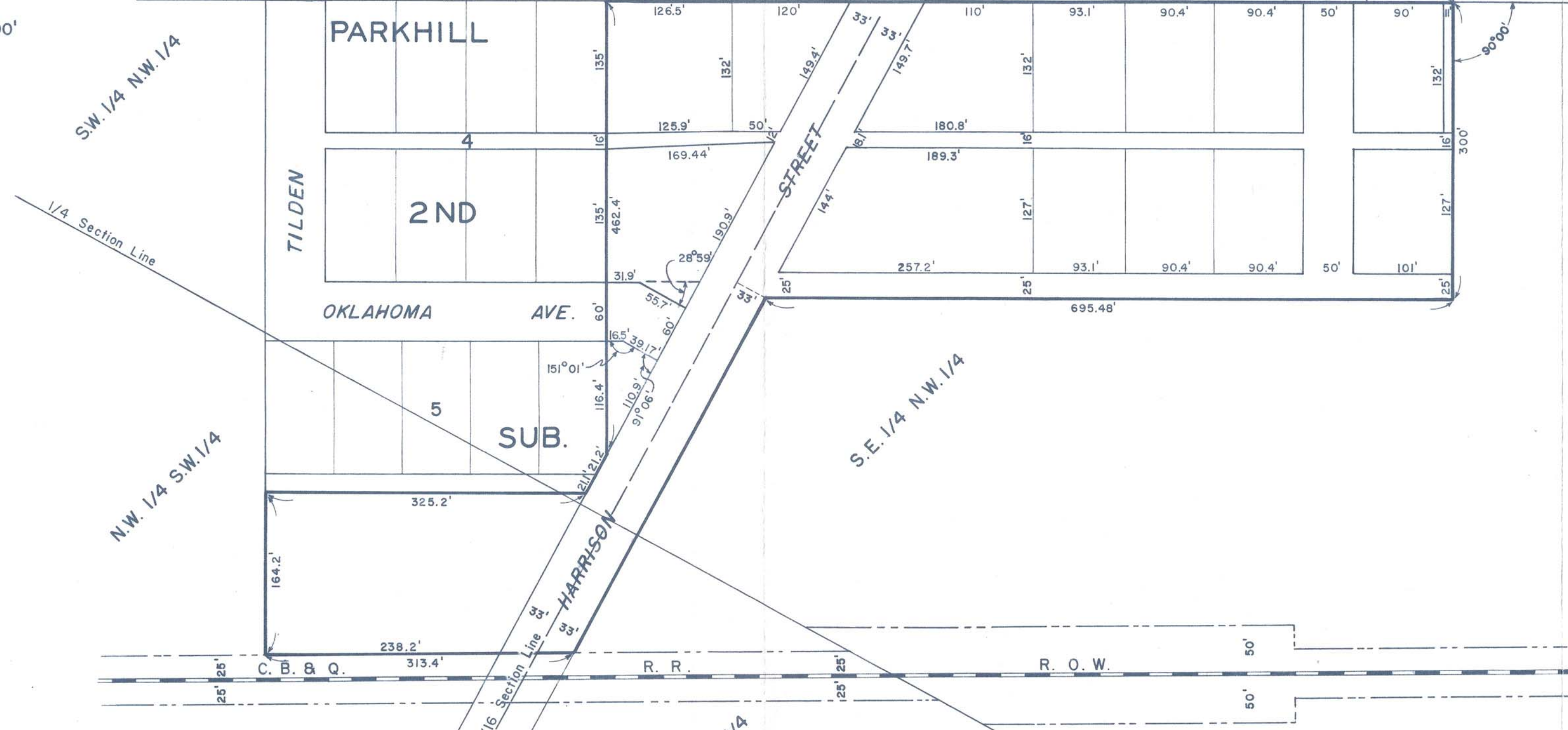


Scale 1"=100'



Approved for annexation to the City of Grand Island, Nebraska, by the City Planning Commission on this 1st day of November 1963.

*John R. Thomazin*  
Chairman of City Planning Commission

3758  
State of Nebraska } ss  
County of Hall }  
Entered on Numerical Index and filed  
for record in Office of Register of  
Deeds on the 12th day of  
November, 1963 at 9  
o'clock and 25 minutes A.M.  
and recorded in Book 77 of  
Missile at page 307  
*Donald W. Jacobsen*  
Register of Deeds  
By \_\_\_\_\_ Deputy  
Fees \$ 9.25

PLAT OF TERRITORY  
IN THE  
W.1/2 OF SECTION 21-T.11 N.-R.9W.  
ANNEXED BY ORDINANCE NO. 4070  
TO THE  
CITY OF GRAND ISLAND,  
HALL COUNTY,  
NEBRASKA