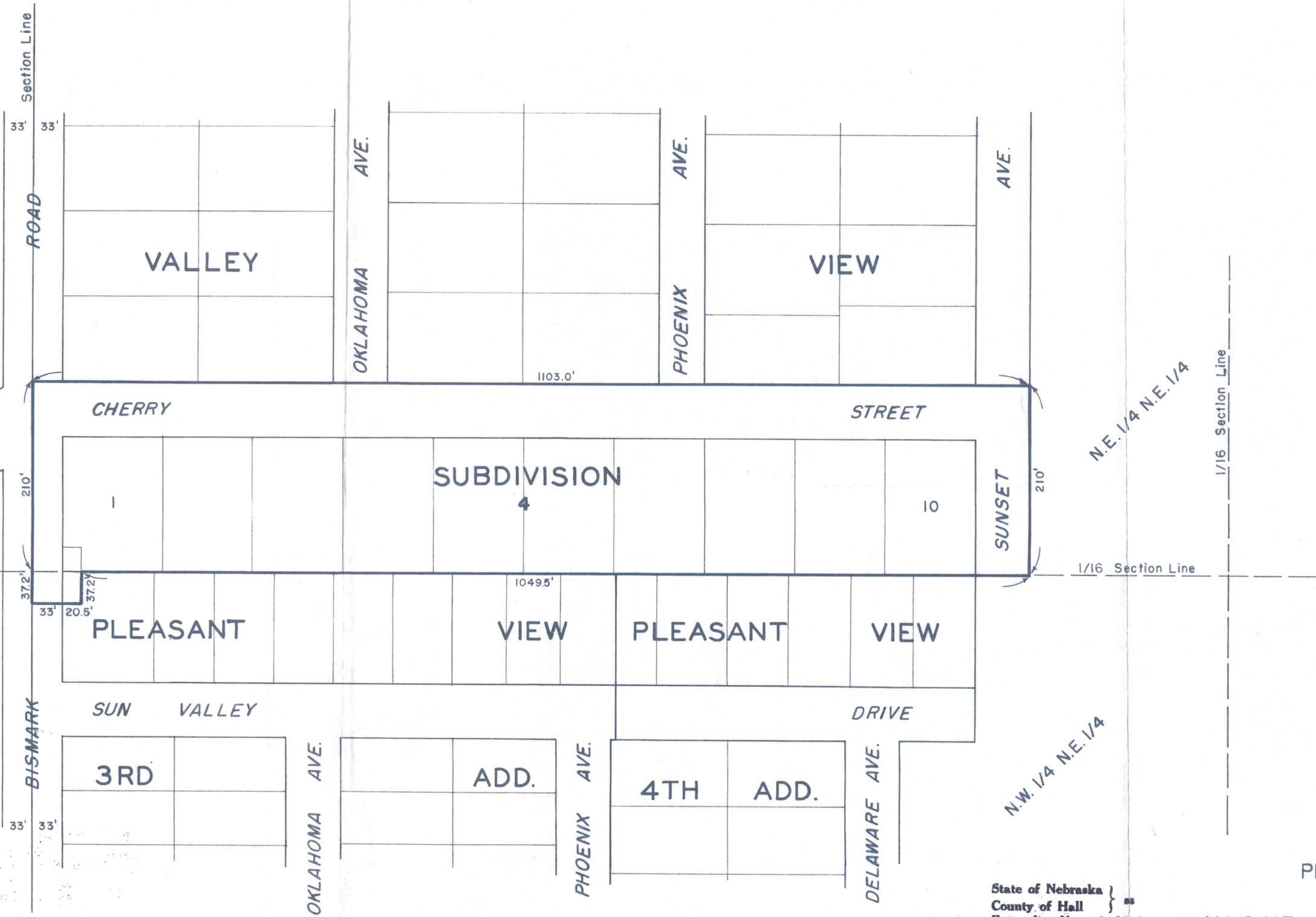




Scale 1"=100'



Approved for annexation to the City of Grand Island, Nebraska, by the City Planning Commission on this 16 day of October 1963.

*John A. Thomas*  
Chairman of City Planning Commission

State of Nebraska }  
 County of Hall } ss  
 Entered on Numerical Index and filed for record in Office of Register of Deeds on the 11th day of November 1963 at 10 o'clock and 00 minutes A.M. and recorded in Book "7" of *Missell* at page *323*  
 By *Raymond B. Hessel* Deputy  
 Fees \$ *8.50*

PLAT OF TERRITORY  
 IN THE  
 N.E. 1/4 N.E. 1/4 OF SECTION 22-T.11N.-R.9W.  
 ANNEXED BY ORDINANCE NO. 4063  
 TO THE  
 CITY OF GRAND ISLAND,  
 HALL COUNTY,  
 NEBRASKA