

C E R T I F I E D  
C O P Y

ORDER OF COUNTY BOARD OF HALL COUNTY, NEBRASKA,  
DESIGNATING INDUSTRIAL AREA IN HALL COUNTY, NEBRASKA

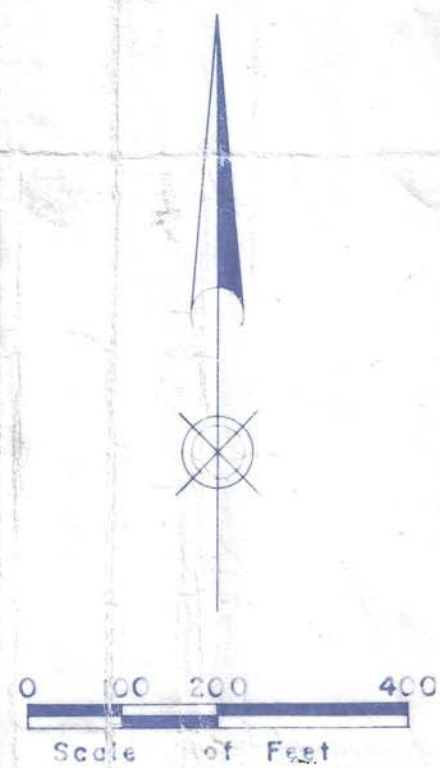
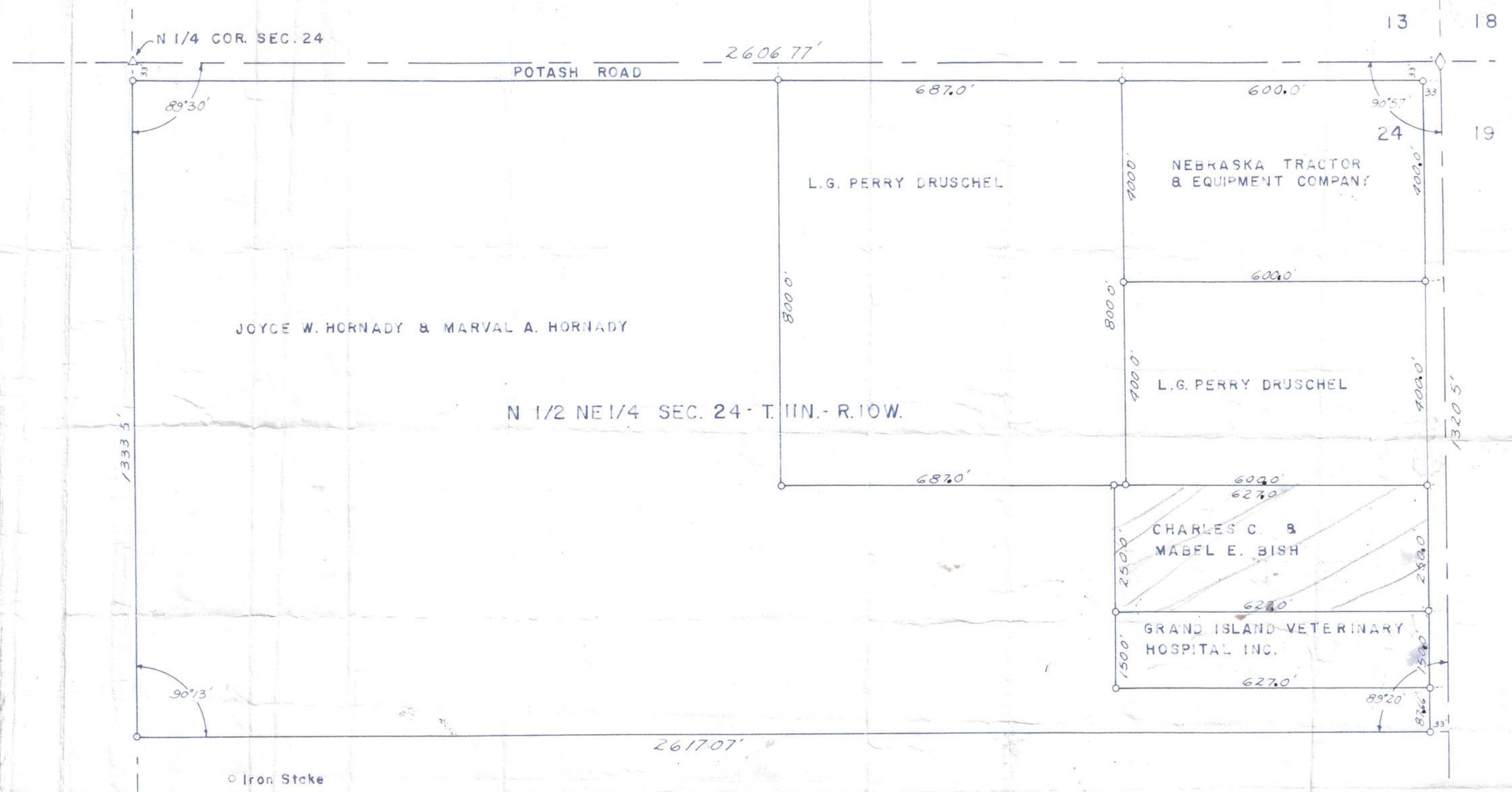
WHEREAS, on March 28, 1958, there was filed with the County Clerk of Hall County, Nebraska, a Petition for Industrial Area by Joyce W. Hornady and Marval A. Hornady, husband and wife, Nebraska Tractor & Equipment Company, a corporation, L. G. Perry Druschel, and The Grand Island Veterinary Hospital, a corporation, owners of the contiguous tract of real estate, hereinafter described, requesting the County Board of Hall County, Nebraska, to designate such contiguous tract as an Industrial Area, and

WHEREAS, upon the filing of the Petition for Industrial Area, by the owners above named, the County Clerk of Hall County, Nebraska, designated the 5th day of May, 1958, beginning at 10:00 a.m., as the day for the hearing and determination of the said Petition by the County Board of Hall County, Nebraska, and said County Clerk endorsed on said Petition the day for the hearing and determination of the said Petition by the County Board of Hall County, Nebraska, and

WHEREAS, the County Clerk of Hall County, Nebraska, published a notice once each week three successive weeks in the Grand Island Daily Independent, a newspaper published and of general circulation in Hall County, Nebraska, and the Affidavit of Publication has been filed in the office of the County Clerk of Hall County, Nebraska, showing such publication of notice, and said notice stated the time and place of hearing and the land affected thereby, and

WHEREAS, on the 5th day of May, 1958, at 10:00 a.m., the Petition came on for hearing at a public hearing before the County Board of Hall County, Nebraska, the time fixed in the notice for said hearing, and evidence was produced at said hearing, and the County Board of Hall County, Nebraska, finds from the evidence produced at said hearing that (1) such tract is suitable for use as an industrial area, (2) it will be generally beneficial to the community, and (3) the owners of all the land embraced therein have consented to such designation, and





*Cert. Copy of Order & Plat.*

State of Nebraska }  
 County of Hall } ss  
 Entered on Numerical Index and filed  
 for record in Office of Register of  
 Deeds on the 20 day of  
 May 1958 at 1  
 o'clock and 20 minutes P.M.  
 and recorded in Book 24 of  
 Maps at page 297  
 Edna Bohm  
 Register of Deeds  
 By \_\_\_\_\_  
 Deputy  
 Fees \$ \_\_\_\_\_

**SURVEYOR'S CERTIFICATE**

I hereby certify that the plat is from an accurate survey of the described property to the best of my knowledge and belief.

*Edwin D. Benjamin*  
 Registered Land Surveyor

**HORNADY'S INDUSTRIAL AREA**  
**HALL COUNTY, NEBRASKA**