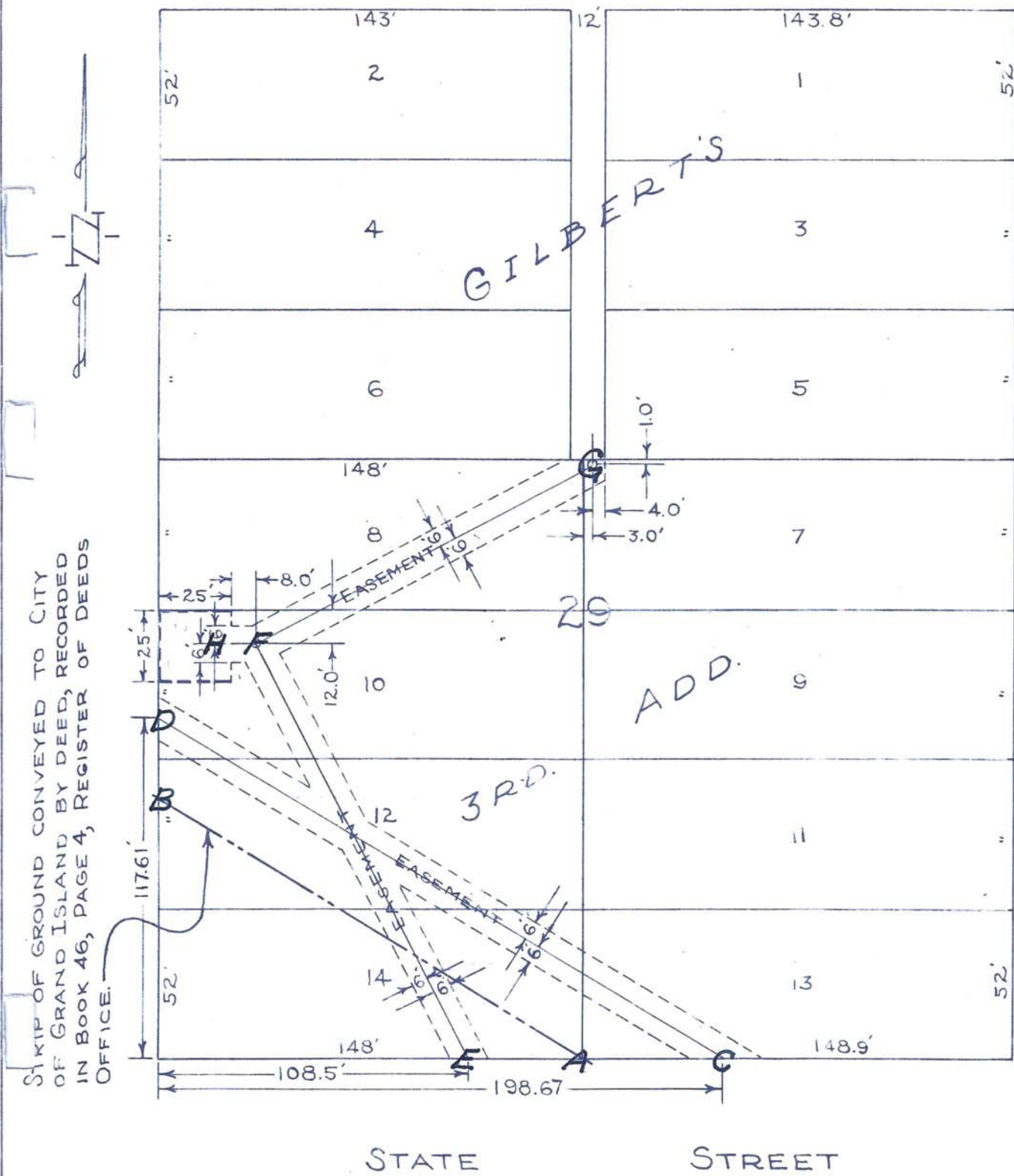




EXHIBIT "A"



STRIP OF GROUND CONVEYED TO CITY OF GRAND ISLAND BY DEED, RECORDED IN BOOK 46, PAGE 4, REGISTER OF DEEDS OFFICE.

PLAT OF EASEMENTS FOR SANITARY SEWERS ON LOTS 7-8-10-12-13-14, BLOCK 29, GILBERT'S 3RD. ADDITION TO THE CITY OF GRAND ISLAND, NEBRASKA.

March-22-1951

*Ray Harrison*  
CITY ENGINEER

SCALE 1"=50.0'

H.W.S.